

DIGIFISH

Seahorse





Catalog

System requirement	2
Hardware	2
Software	2
Installation	3
ActiveDesktop	3
Toolbar	4
Setup window	5
Tank menu	6
Fish menu	7
Random fish setup	8
Control menu	10
Light menu	11
Music menu	12
Photo menu	13
Display menu	14
Option menu	16
Hotkey Table	17
Credits	18



System requirement

Hardware

- **CPU** : Intel or AMD 600 MHz and up
- **RAM** : 256MB system memory and up
- **3D Hardware Accelerator Card** : DirectX compatible with 32 MB Video RAM or more
- **Sound** : DirectSound compatible 16-bit sound card
- **Hard Drive** : More than 10 MB free disk space

Software

- **Operating System** : Microsoft Windows 98/Me/2000/XP/VISTA
- **Video Driver** : Supports Microsoft DirectX 9.0c



Installation

Please pay attention to similar characters in the serial number, such as number 0 and letter O, number 1 and letter I. We recommend you copy from our registration email directly and then paste the serial number.

After installation, double-click the icon on the desktop to start DigiFish Seahorse.



DigiFish
Seahorse

ActiveDesktop

DigiFish Seahorse has an unique Active Desktop Module. It can turn your desktop into a beautiful desktop aquarium.

Not every operating system supports this function. Currently, Windows VISTA™ operating system does not support Active Desktop function. Please make sure that you have the correct software and hardware specification which support Active Desktop function. You can get more related information from the publisher and then get this function expanded in your **DigiFish Seahorse**.



DigiFish
Seahorse
Active
Desktop



Toolbar



Please right-click (Hotkey : **Enter**) on the screen to pop-up the toolbar, and then left-click the icons on the toolbar to initiate the function.



Touch : You can move the hand-shaped cursor and click the class to tease the fish. (Hotkey : **F2**)



Feed : You can feed the fish in the aquarium.
(Hotkey : **F3**)



Zoom In : You can take a closer look of the aquarium.
(Hotkey : **Z**)



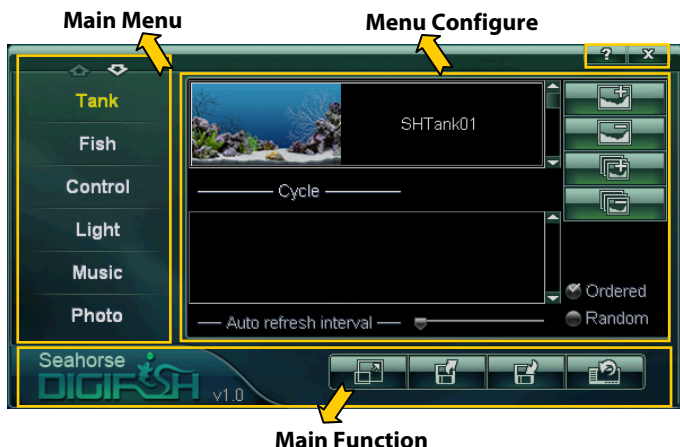
Setup : The setup window will pop up.
(Hotkey : **Space**)



Exit : Leave the DigiFish Seahorse.
(Hotkey : **Esc**)



Setup window



Menu up and down : Click to scroll menu items.



Toggle window / full-screen mode : Switch between window and full-screen mode. (Hotkey : **F**)



Load setting : Load previous setting.



Save setting : Save current setting.



Default setting : Back to the default setting.



Help : Display the Hotkey List. (Hotkey : **F1**)



Close : Close the setup window.



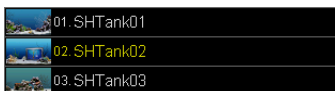
Visit our <http://www.digifish.us/> website.



Tank menu



Tank list and the current tank : Left-click to change current tank.



Cycle tank list.



Add the tank to the cycle tank list.



Add all tanks to the cycle tank list.



Remove the tank from the cycle tank list.



Clear the cycle tank list.

- Ordered** : The tanks cycle in order of the list.
- Random** : The tanks cycle in random order.
- Auto refresh interval** : Adjust the intervals for tanks cycling.



Hint : The cycle tank will not change if you select neither Ordered nor Random check box. Nor does the Auto refresh interval function work in such case. By pressing hotkey **Page Up** or **Page Down**, you can change all types of tanks.



Fish menu



Fish list : By left-clicking the fish icon, you can add the fish into the tank and by left-clicking the number icon to remove fish.



Switch to random fish list setup.



Clear all fishes.



List fish mode : Only shows the image and number of each species of fish.

Total : The total number of fish currently in the tank.

Max : The upper limit of fish in the tank.



Random fish : By left-clicking on the fish icon, random types of fish from the random fish list will be added into the tank.



Random fish setup



Random fish list : By left-clicking on the fish icon, the fish will be added to or removed from the list. The removed one shows in a darkened color which is different with candidates. When viewing the aquarium, the type of random fish will refresh while entering or switching into a new tank.



Switch to fish list setup.



No one select : Clear all candidates.



All select : All types of fish are candidates.



+1 : Add one more random fish.



-1 : Cut down one random fish.



Refresh : Refresh new random fish into the tank.
(Hotkey : **R**)

Random : The total number of random fish in the tank.

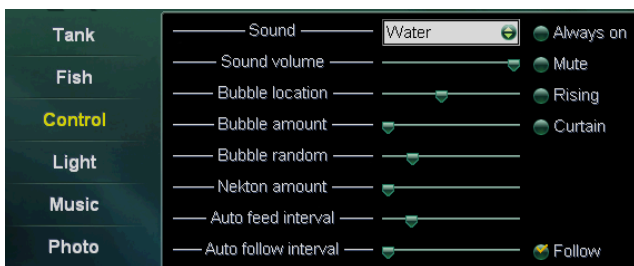
Max : The upper limit of random fish.



- **Don't duplicate same fish** : If checked, none of random fish is the same species. The number of random fish is not greater than that of candidates fish.
- **Auto refresh when tank cycled** : If checked, refresh random fish when tank changed.
- **Auto refresh enable** : If checked, refresh random fish according to the time interval.
- **Auto refresh interval** : Adjust the time interval of refreshing random fish.



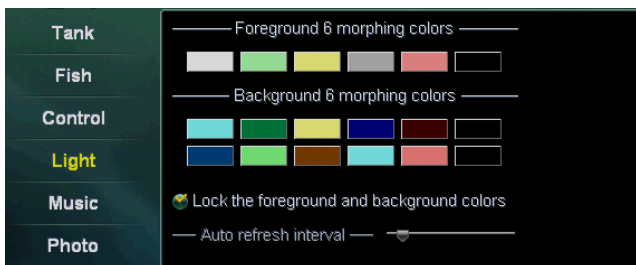
Control menu



- **Sound** : Choose sound effect from drop list.
- **Sound volume** : Adjust the volume of sound.
- **Always on** : If checked, the sound always on when window is not active.
- **Mute** : If checked, the sound turn off. (Hotkey : **B**)
- **Bubble location** : Adjust the bubbles pop up location. (Hotkey : **Left/Right**)
- **Bubble amount** : Adjust the amount of bubbles.
- **Rising** : If checked, the bubbles pop up from bottom of the tank. (Hotkey : **Up/Down**)
- **Curtain** : If checked, the bubbles will come in a curtain style instead of focusing on one spot. (Hotkey : **C**)
- **Bubble random** : Adjust the amount of random bubbles.
- **Nekton amount** : Adjust the amount of nekton.
- **Auto feed interval** : Adjust the time interval of auto feeding.
- **Auto follow interval** : Adjust the time interval of auto following fish.



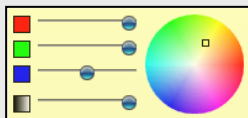
Light menu



There are total 6 sets of lighting, each including one foreground light (Foreground 6 Morphing Colors) and two background light (Background 6 Morphing Colors). The tank goes gradually from one color to another.



Hint :

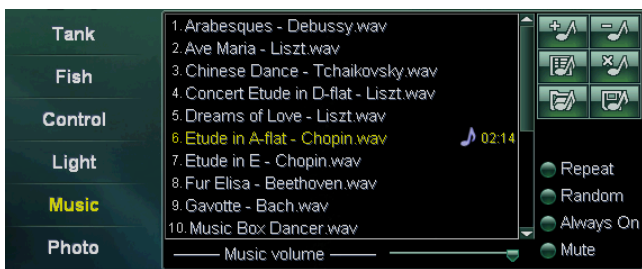


By left-clicking on corresponding color, a palette shows as above. You can modify the color by yourself.

- **Lock the foreground and background Colors** : If checked, the light will fix at current color.
(Hotkey : **L**)
- **Auto refresh interval** : Adjust the time interval for the light changing.



Music menu



Add music files : Add music files to the playlist.



Remove the music : Remove the selected music from the playlist.



Add music files of directory : Add all music files under a music directory to the playlist.



Clear list : Remove all music files in the playlist. (The music file will not be deleted).



Add music play list : Add all music files in an music playlist file to the playlist.



Save music play list : Save the playback list.



Repeat : Repeatedly playing the current music.



Random : Randomly playing all music files in the playlist.



Always on : If checked, the music always on when window is not active.



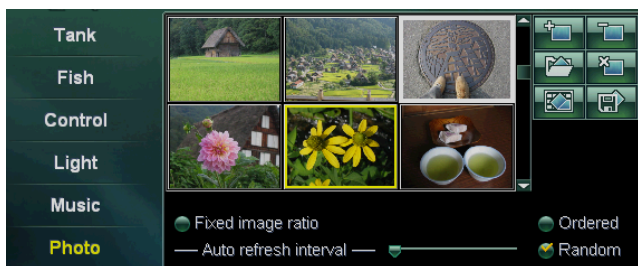
Mute : If checked, the music turn off.
(Hotkey : **M**)



Music volume : Adjust music volume.



Photo menu



Add photo files : Add photo files to current album.



Remove the photo : Remove the selected photo from current album.



Add photo files of directory : Add all photo files under a directory to current album.



Clear current album : Remove all photos in current album.



Add album file : Add all photos in a album file to current album.



Save album file : Save current album in a text file.



Fixed image ratio : If checked, the photo will be showed by the ratio of its dimensions.



Auto refresh interval : Adjust the time interval of auto refresh photo.



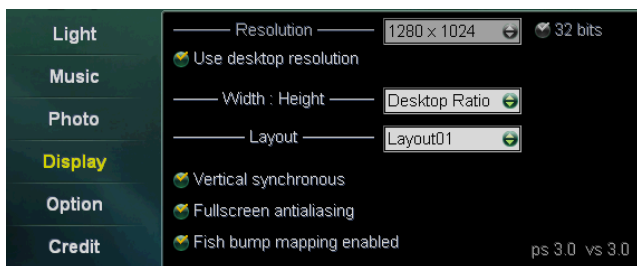
Ordered : The photo showed in order of the list.



Random : The photo showed in random order of the list.



Display menu



- **Resolution** : Setup the display mode's spatial resolution.
- **32 bits** : If checked, only 32 bits color resolution will be showed at **Resolution** drop list.
- **Use desktop resolution** : If checked, the desktop resolution will be applied.
- **Width : Height** : Setup the view ratio of width to height.
- **Layout** : Setup the skin of setup window.
- **Vertical Synchronous** : If checked, the displayed image will not be updated more frequently than the monitor refresh. If unchecked, you may get a higher FPS (frame per second) and a tearing image.

Hint : Vertical Synchronous

A monitor refreshes its image by moving a light pin horizontally, zigzagging from the top left of the monitor and ending at the bottom right. When the light pin reaches the bottom, the monitor recalibrates the light pin by move it back to the upper left so that the process can start again. This recalibration is called a vertical sync or VSync for short.





- Full-screen antialiasing** : It can be checked only when your video card support the function at full-screen.

Hint :



Disabled

Enabled

Antialiasing is a technique you can use to reduce the appearance of stair-step pixels when drawing any line that is not exactly horizontal or vertical. Antialiasing effectively blends the pixels at these boundaries to produce a more natural look to the scene.



- Fish bump mapping enabled** : It can be checked only when your video card support the function. If checked, more detailed surface will be shown on fish.



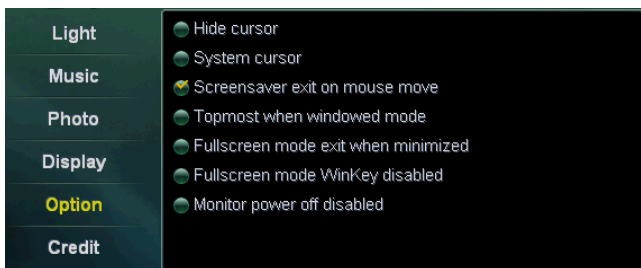
Disabled

Enabled

- PS & VS** : The version of pixel shader and vertex shader. A shader is a set of software instructions which are dependent on your video card.



Option menu



- Hide cursor** : If checked, the cursor is hided when setup window and toolbar are closed.
- System cursor** : If checked, the system cursor is in place of default cursor.
- Screen Saver exit on mouse move** : If checked, screensaver mode exit when mouse moving was detected.
- Topmost when windowed mode** : If checked, window mode is topmost always. (Hotkey : **T**)
- Full-screen mode exit when minimized** : If checked, full-screen mode exit when window is minimized.
- Full-screen mode WinKey disabled** : If checked, the Win-key will be disabled at full-screen mode.
- Monitor power off enabled** : If checked, allow the monitor power off.



Hotkey Table

[F1]	Help (Windowed/Full-screen)
[F2]	Hand cursor
[F3]	Feed cursor
[Enter]	Toolbar popup/close
[Right Click]	Toolbar popup/close
[Up]/[Down]	Rising/Falling bubbles
[Left]/[Right]	Move bubbles left/right
[B]	Bubbles sound on/off
[C]	Bubble curtain on/off
[F]	Full-screen/Windowed mode
[L]	Lock light on/off
[M]	Music on/off
[R]	Refresh random fish
[S]	Show frame rate and resolution
[T]	Topmost windowed on/off
[W]	Wireframe/Normal mode
[Z]	Zoom In
[PageUp]	Prior cycle tank
[PageDown]	Next cycle tank
[Space]	Setting
[ESC]	Exit



Credits

Executive Producer

Gordon Kuo

3D Fish Model Artists

Janny Su, Kevin Ting

Development Director

Senyang Huang

GUI Design

Janny Su

3D/VR Programmers

Senyang Huang
Harry Liu, Dennis Hsieh

Website Design

Janny Su

Product Design

Starwing Kao
Minsex Lin, Norman Liu

Sound & Music

Gordon Kuo

Creative Director

Minsex Lin

Manual Design

Starwing Kao
Senyang Huang

Artistic Director

Norman Liu

Product Testers

Gordon Kuo
Senyang Huang
Starwing Kao, Minsex Lin
Norman Liu, Janny Su
Mai Shu Kai, Vincent Shyu
Harry Liu, Dennis Hsieh
William Chang, Sheng Ping

3D Scene Artists

Janny Su
Mai Shu Kai



(C)1999-2008 Formosoft International Inc.
All Rights Reserved.